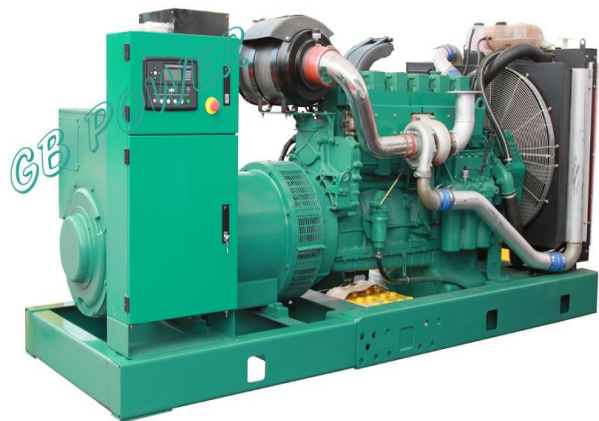


Standard Features

MODEL	GB-40
Standby Power(50Hz)	35.2KW/44KVA
Prime Power(50Hz)	32KW/40KVA
Engine	GBPOWER GB4105D
Alternator	GB POWER GB-PI144J

- **Engine(GB POWER GB4105D)**
- Radiator 40°C max, fans are driven by belt, with safety guard
- 24V charge alternator
- **Alternator(GB POWER GB-PI144J),**
- single bearing alternator, Protection Class IP22, insulation class H/H
- Dry Type air filter, fuel filter, oil filter, pre-filter, absorber
- Main line circuit breaker
- Standard control panel
- One 12V batteries, rack and cable
- Ripple flex exhaust pipe, Exhaust siphon, flange, muffler
- Operation manual



Generator Set Ratings

Voltage	Frequency	Phase	P.F (COS ϕ)	Standby Amps	Standby Ratings (KW/KVA)	Prime Ratings (KW/KVA)
440/254	50	3	0.8	58	35.4/44	32/40
415/240	50	3	0.8	61.6	35.4/44	32/40
400/230	50	3	0.8	63.4	35.4/44	32/40
380/220	50	3	0.8	67.2	35.4/44	32/40

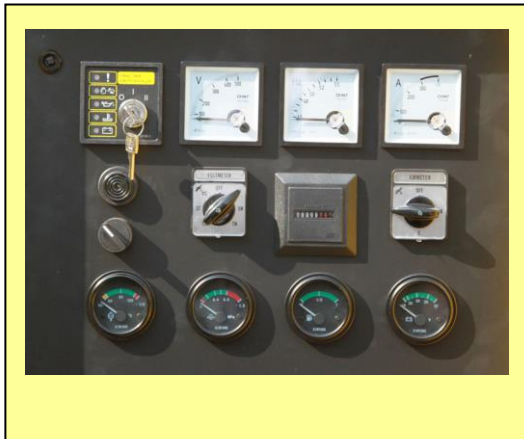
Prime Power (PRP): Prime power is available for an unlimited number of annual hours in variable load application, in accordance with GB/T2820-97 (equiv ISO8528); A 10% overload capability is available for a period of 1 hour within a 12-hour period of operation. Standby Power Rating (ESP): The standby power rating is applicable for supplying emergency

Dimension Of Generator Set	
Dimension(L*W*H)/CM For Open Type	173x73x115CM
Net Weight/KG For Open Type	750KG
Dimension(L*W*H)/CM For Sound Proof Type	180x93x115 CM
Net Weight/KG For Sound Proof Type	1100KG
Dimension (L*W*H)/MM For Trailer Type	
Net Weight/KG For Trailer Type	

Specification Of Engine		
Engine	Engine Model	GB4105D
	Manufacturer	GB POWER
	Prime Power	38KW/52HP
	Standby Power	41.8KW/57HP
	Engine Configuration	4Cylinder In Line, 4Stroke,Direct Injection
	Gas Feeding Model	Naturally
	Bore× Stroke	105×118 (MM)
	Displacement	3.857L
	Rated Speed	1500RPM
	Speed Governor	Mechanical Speed Control System
	Starter Model	12V DC Start
	Fuel Consumption Standby Power (110% load)	
	Fuel Consumption Prime Power (100% load)	≤10.2L/KW.H
	Stable rates	≤5
	Cylinder Sleeve Type	Dry
Lubrication type	Pressure and Splash	

Specification Of Alternator		
Alternator	Alternator Model	GB-PI144J
	Manufacturer	GB POWER CO., LTD
	Prime Output	32KW/40KVA
	Standby Output	35.2KW/44KVA
	Excitation Model	Brushless, Self-Exciting
	Cooling Method	Air Cooling
	Connection Type	3 Phase and 12 Wires "Star" Connection
	Power Factor	0.8
	Protection Class	IP22
	Insulation Class	H
	Altitude	≤1000m
	Voltage Regulation, Steady State	≤±1%
	Telephone Influence Factor	<50
	Sudden Voltage Warp (100% Sudden Reduce)	≤±1%
	Sudden Voltage Warp (Sudden Increase)	≤±25%
	Voltage Stable Time (100% Sudden Reduce)	≤6S
	Voltage Stable Time (Sudden Increase)	≤6S
	Frequency Reduce	0-5% adjustable
	Frequency Regulation, Stead State	≤1.5%
	Frequency Waving	≤0.8%
	Sudden Frequency Warp (100% Sudden Reduce)	≤+12%
	Sudden Frequency Warp (100% Sudden Increase)	≤-10%
	Frequency Recovery Time (100% Sudden Reduce)	≤5S
Frequency Recovery Time (Sudden Increase)	≤5S	
Compliance GB755,BS5000,VDE0530,NEMAMG1-22,IED34-1,CSA22.2 and AS1359 Stands		

Control Panel System



DEEPSEA501K CONTROL MODEL/ MANUAL USE

With Four Protection

- 1.High water Temperature Shutdown
2. Low Oil Pressure Shutdown
3. Over Speed Shutdown
4. Over Crank Shutdown
5. Protection as Emergent Stop

Parameters of Operation:

1. Emergency Stop Button
- 2.Voltmeter and Selector Switch
3. Ammeter and Selector Switch
4. Frequency Meter
5. Hour Running Meter
- 6.Alart Buzzer



DEEPSEA6020 CONTROL MODEL/ MANUAL OR ATS USE

With Four Protection

- 1.High water Temperature Shutdown
2. Low Oil Pressure Shutdown
3. Over Speed Shutdown
4. Over Crank Shutdown
5. Protection as Emergent Stop

Parameters of Operation:

Digital type, all function showed by LED



DEEPSEA7320 CONTROL MODEL/ MANUAL OR ATS USE

With Four Protection

- 1.High water Temperature Shutdown
2. Low Oil Pressure Shutdown
3. Over Speed Shutdown
4. Over Crank Shutdown
5. Protection as Emergent Stop

Parameters of Operation:

Digital type, all function showed by LED